

CONECUT®

HIGH SPEED STEEL SHEET AND TUBE DRILLS

The most versatile hole-cutting tool for rapid drilling and enlarging holes in thin materials up to 2mm thick.

Designed for industrial applications, the diameter of the hole increases as the CONECUT® is advanced into the material, providing infinitely variable sizes

For use in sheet steel, non-ferrous metals, plastics, Formica and plywood



HIGH SPEED STEEL SHEET & TUBE DRILLS

METRIC / IMPERIAL

The most comprehensive range of Drills for all applications. Below is listed our current standard stock range - please enquire for other sizes. When drilling metals always use cutting compound - available in 30cc, 60cc and 1/2 kilo sizes.



TOOL NO	METRIC RANGE	IMPERIAL RANGE (APPROX)	SHANK TO FIT CHUCK SIZE	DRILLING SPEEDS RPM	
				FERROUS	NON-FERROUS
CC 0	3 - 14mm	(1/8" - 9/16")	1/4" (6.5mm)	400-800	900-2000
CC 1	6 - 20mm	(1/4" - 13/16")	3/8" (10mm)	200-600	500-1500
CC 1A*	9.5 - 22.5mm	3/8" - 7/8")	3/8" (10mm)	200-600	500-1500
CC 2*	16 - 30.5mm	(5/8" - 1.31/16")	3/8" (10mm)	150-400	400-1000
CC 3	25 - 40mm	(1" - 1.58")	3/8" (10mm)	100-300	300-500
CC 4+	37 - 52mm	(1.1/2" - 2.1/16")	1/2" (13mm)	100-200	200-400
CC 25**	16 - 25mm	(5/8" - 1")	3/8" (10mm)	150-400	400-1000
CC 820	8 - 20mm	(5/16" - 13/16")	3/8" (10mm)	200-600	500-1500
CC 430	4 - 30.5mm	(5/32" - 1.31/16")	3/8" (10mm)	150-400	400-1000
CC 830	8 - 30mm longdrill	(5/16" - 1.31/16")	3/8" (10mm)	150-400	400-1000
CC 315	3 - 15mm	(1/8" - 19/32")	1/4" (6.5mm)	400-800	900-2000

* Finishing diameters of sizes 1A and 2 are designed to produce the international standard hole sizes for fitting of pushbuttons and indicator lights
 ** Covers 20mm + 25mm conduit lights
 + Pilot hole required

TiN - TITANIUM NITRIDE COATED



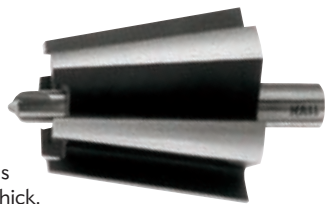
Prolongs tool life and reduces torque. Resists wear and abrasion while reducing pick-up along the cutting edge. Lower friction results in higher drilling speeds.

TOOL NO	METRIC RANGE	IMPERIAL RANGE (APPROX)	SHANK TO FIT CHUCK SIZE
CC 0 TiN	3 - 14mm	(1/8" - 9/16")	1/4" (6.5mm)
CC 1 TiN	6 - 20mm	(1/4" - 13/16")	3/8" (10mm)
CC 2 TiN	16 - 30.5mm	(5/8" - 1.31/16")	3/8" (10mm)

TREPANNING ACTION

Variable sizes of larger diameters can be drilled without the need for a pre-drilled hole, with a smooth multi-flute action ensuring that clean round holes are produced.

For drilling or enlarging holes in ferrous and non-ferrous material up to 2mm thick.



TOOL NO	METRIC RANGE	IMPERIAL RANGE (APPROX)	SHANK TO FIT CHUCK SIZE	DRILLING SPEEDS RPM
				FERROUS NON-FERROUS
TCC 3451	34 - 51mm	(1.3/8" - 2")	1/2" (13mm)	50-200 200-400
TCC 4360	43 - 60mm	(1.3/4" - 2.3/8")	1/2" (13mm)	50-150 150-400

Spare Centre Drill - can be purchased separately

CUTTING COMPOUND

Helps maintain the sharpness of the cutting edge. Lubricity reduces torque and prevents undesirable material build up on the tool. Suitable for other metal cutting operations - thread cutting, normal drilling. ALWAYS USE WHEN DRILLING METALS.



REF	CONTAINER SIZE	PACK QUANTITY
09A 30	30cc	1
09A 60	60cc	1
09A 1/2K	1/2 kilo	1
09A 6020	60cc	Box of 20
09A 6040	60cc	Box of 40

SINGLE HOLE SIZE



For drilling holes of one diameter. Below are listed current standard stock sizes - please enquire for other diameters.

TOOL NO	HOLE SIZE	SHANK TO FIT CHUCK SIZE	DRILLING SPEEDS RPM	
			FERROUS	NON-FERROUS
CSSH 375C	3/8"	1/4" (6.5mm)	500-1200	1200-3000
CSSH 500C	1/2"	1/4" (6.5mm)	350-1000	1000-2000
CSSH 750C	3/4"	3/8" (10mm)	200-600	600-1300
CSSH 875C	*7/8"	3/8" (10mm)	200-600	600-1300
CSSH 1000C	1"	3/8" (10mm)	150-400	400-1000
CSSH 1125C	*1.1/8"	3/8" (10mm)	150-500	500-1000
CSSH 1375C	*1.3/8"	3/8" (10mm)	120-400	400-800

* 1/2" - 3/4" - 1" USA knock-out sizes

RUSTPROOFING

Used to produce the holes required for the rustproofing treatment of motor vehicles. Sizes coincide with plastic plugs inserted after injection of protective fluid.



TOOL NO	HOLE SIZE	SHANK TO FIT CHUCK SIZE	DRILLING SPEEDS RPM
			FERROUS
RP 1	8mm	1/4" (6.5mm)	500-1200
RP 2	10mm	1/4" (6.5mm)	500-1200

SETS | PLASTIC WALLET

Plastic wallet containing Conecut® tools and 30cc pot of special cutting compound.



SET REF	CONTAINS TOOL NUMBERS	RANGE
CP 12	CC1 & 2	6 - 30.5mm
CP 210	CC0, 1 & 2	3 - 30.5mm
CP 2025*	CC1 & 25	6 - 25mm
CP 2230**	CC1A & 2	9.5 - 30.5mm

* Electricians

** Electronics

SETS | METAL CASSETTE

Metal cassette containing Conecut® tools and 30cc pot of special cutting compound.

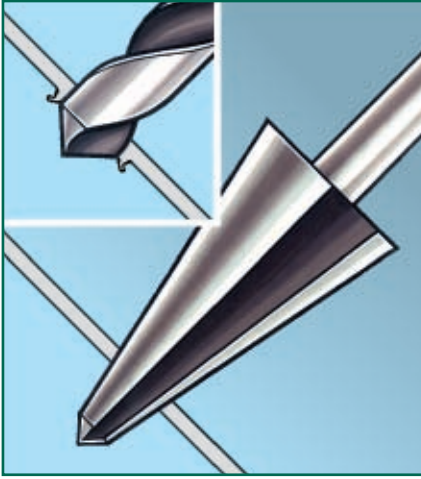


SET REF	CONTAINS TOOL NUMBERS	RANGE
CM 210	CC0, 1 & 2	3 - 30.5mm
CM 210TiN	CC0 TiN, CC1 TiN & CC 2 TiN	3 - 30.5mm

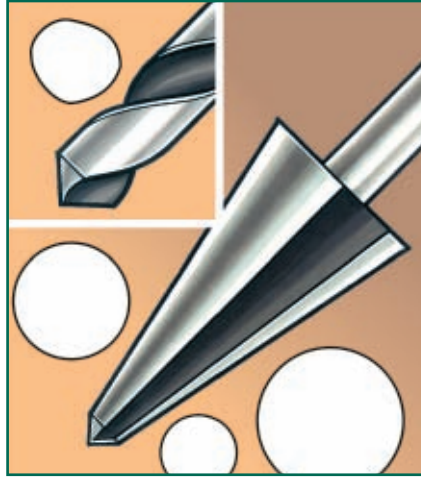


For metric/imperial unless otherwise specified, Conecut® with a steam tempered blue surface treatment, which is advantageous in many applications will be supplied. However, should it be required, all metric/imperial tools can be supplied with bright ground finish on body and point.

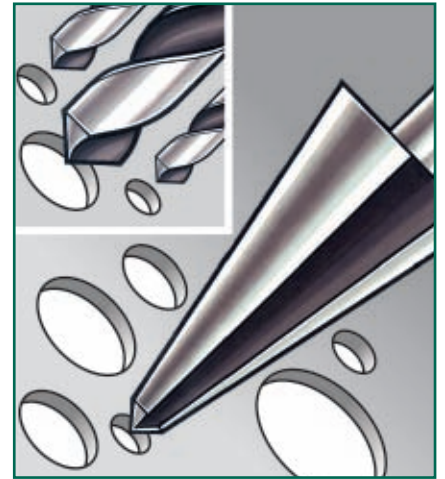
ADVANTAGES OVER CONVENTIONAL DRILLS:



BURR FREE HOLES



PERFECTLY ROUND HOLES



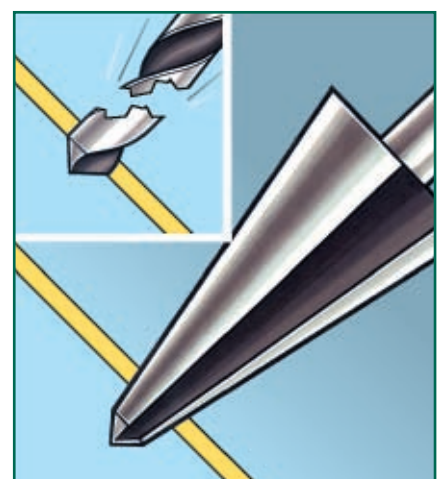
ONE TOOL - A RANGE OF SIZES



NON-SLIP POINTS



DRILLS PLASTICS EASILY



STRONGER - MORE RIGID

CONECUT® FEATURES

Non-slip point; needs no centre punch

No flexing of drill whilst drilling

Multi-flute design

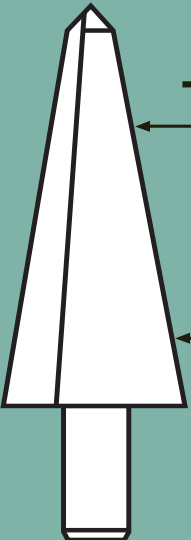
Drills from 3mm - 60mm dia.

Enlarges existing holes

Shank will not slip in chuck

Produces round, virtually burr-free holes in material up to 2mm thick

Drills holes of any diameter within range



APPLICATIONS:

- ELECTRICAL
- HEATING
- VENTILATION
- PLUMBING
- SHOPFITTING INSTALLATIONS ETC.
- AUTO BODY REPAIR
- CONTROL PANELS
- SHEET METALWORK ETC.
- MAINTENANCE